

# MAXTRACK MGS100/200

## Hardwiring Guide



### MGS100/200 KIT INCLUDES

- MGS Device
- Power Harness
- Covert Antenna (MGS200 only)
- 1 Blue Terminal Ring
- 4 Zipties

Watch the 2 minute installation video here >



## MGS100/200 FEATURES

- Built-in 3D accelerometer movement detection
- Internal, replaceable SIM
- Over-the-air configuration update
- 2 LED for status indication
- 4 inputs - general purpose internally pulled inputs
- Operating temperature conditions: 14° - 149° F / -10° - 65° C

## OVERVIEW OF THE MGS LEDS

The MGS100/200 LED indicator lights have been designed to provide a simple visual reference regarding the device's current status. The table describes each status and the respective LED indications.

Green LED			
	<b>OFF</b>	Power down mode	
	<b>Flash</b>	Low power mode	
	<b>Slow</b>	Full power mode / Ignition OFF	
	<b>Fast</b>	Full power mode / Ignition ON	
Red LED			
	<b>OFF</b>	No faults detected	<b>2 - 5</b> Last data session failed
	<b>1 - 1</b>	License key expired	<b>2 - 6</b> Data Plan is not available
	<b>1 - 2</b>	Low supply voltage	<b>3 - 1</b> GPS module fault
	<b>1 - 3</b>	Allocated data usage exhausted	<b>3 - 2</b> GPS antenna open/short
	<b>2 - 1</b>	HSPA module fault	<b>3 - 3</b> GPS no track (0 sat)
	<b>2 - 2</b>	Not activated	<b>3 - 4</b> GPS no x (<3 sat)
	<b>2 - 3</b>	No HSPA signal	<b>3 - 5</b> GPS no time
	<b>2 - 4</b>	Network not found	<b>4 - 2</b> Data transfer failed

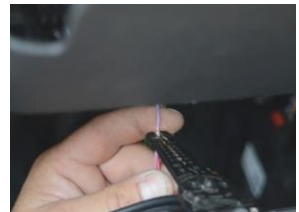
## INSTALLATION

To install the unit, perform the following steps:

1. Mount the device in a location with least amount of exposure to damage by people or objects. Possible mounting locations are under the central console, behind the dash, behind the glove compartment or in the trunk.

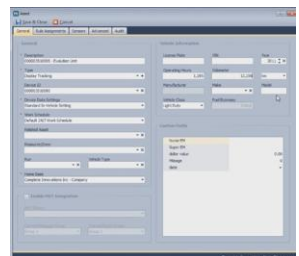


2. Run the ground (black) wire to a suitable chassis ground by using the crimp ring terminal.
  3. Run the positive (red) wire to the constant power (+12 volts DC at all times) and splice an in-line fuse holder to the end. This is to protect the wire run.
  4. Splice the other side of the fuse holder to the power wire identified in the vehicle with solder or crimp terminal.
  5. Run the ignition switch input wire (white) to the primary ignition wire in the vehicle. Locate the appropriate wire under the dash. When the ignition key is turned to the "On or Run" position, this will show +12 Volts DC.
  6. For MGS200 only, install the covert antenna under the dash with a direct view of the sky unobstructed by any metal panels and connect to the modem. Hide wires for safety.
  7. Confirm LED Lights.
  8. Login into KG Track Application and update the asset with Vehicle ID, VIN and Odometer reading.
- 



There are two acceptable methods of making a wire connection:

- Solder the 12v Constant Power and Ground cables to the vehicles power center.
- Crimp connectors with the use of the proper crimping tool.



## FAQ

### **Where in a truck is the best place to hardwire an MGS100/200?**

The best places to hardwire an MGS100/200 in a vehicle are under the center console, inside the dashboard, under the glove compartment or in the trunk. For MGS100, be sure the device is not obstructed bimetal to avoid signal interference.

### **Can I install the modem outside of the vehicle?**

No. MGS100/200 are not weather-proof and must be installed in a dry location.

### **Can I wire the modem to the back of the car radio or with other accessories?**

No, you will not get proper idle reports because the modem will not be able to monitor the ignition status properly.

### **Where is the best place to get a proper power and ignition?**

Use the proper power or ignition wire directly from the ignition switch or behind the fuse box. Do not use the intermittent power sources such as brakes power wires, lights, radio or other accessories. The modem will not receive correct reading of the ignition status and will cause "Movement without ignition errors" and improper idling report.

### **What is the best way to connect**

### **the wires?**

There are two acceptable methods of making a wire connection: soldering the wires with the soldering iron or weave and crimp the connectors with the use of the proper crimping tool. DO NOT use t-tap connectors. Always tape the connections after soldering or crimping to rust-proof.

### **Where is the best place to mount the antenna?**

Install the MGS200 covert antenna behind a non-metal panel inside the dashboard. Mount the antenna with the red side facing up. Ensure to stay away from any metal panels.

### **Can additional sensors, such as door or temperature sensor, be installed with the MGS100/200?**

Yes, the power harness provided with the kit allows up to 4 sensor inputs, such as temperature, door, PTO and other sensors.

### **What is the Default Data Settings (DDS) for MGS100/200?**

The DDS for MGS100/200 is to record 1 position every 2 min and transmit location data to the server every 6 min. DDS Settings can be adjusted in the KG Track application under Asset Settings.

### **What data is collected and transmitted by the MGS100/200 device?**

Date, time, location - address and coordinates, speed, direction of travel, ignition status, battery level, odometer, sensor status.